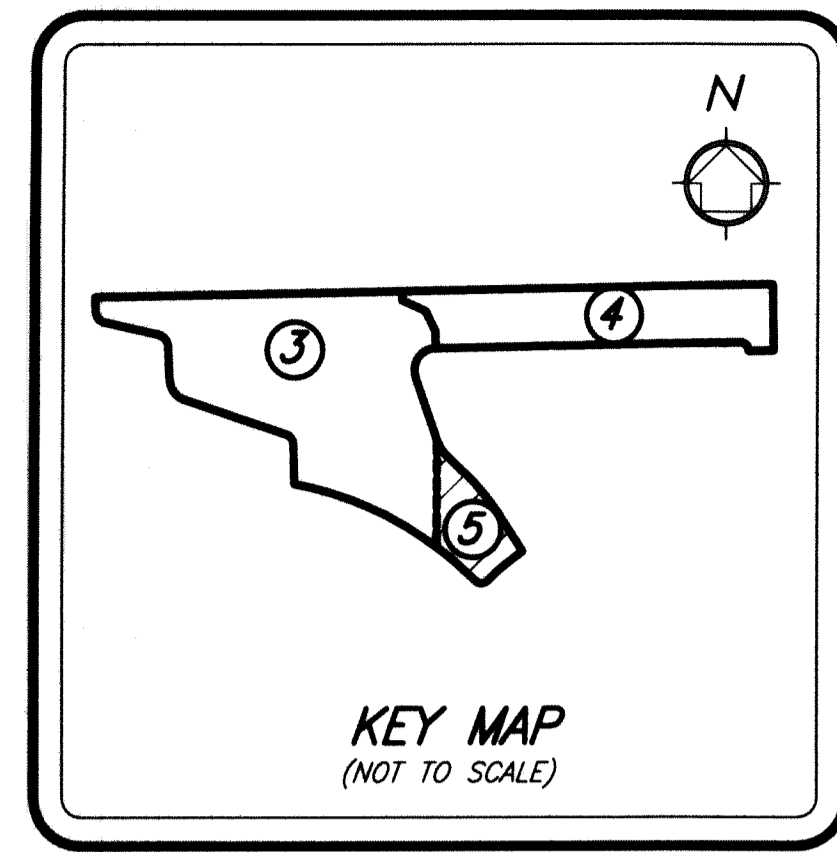


BOCA DEL MAR PUD - BANYAN COVE AT MIZNER VILLAGE

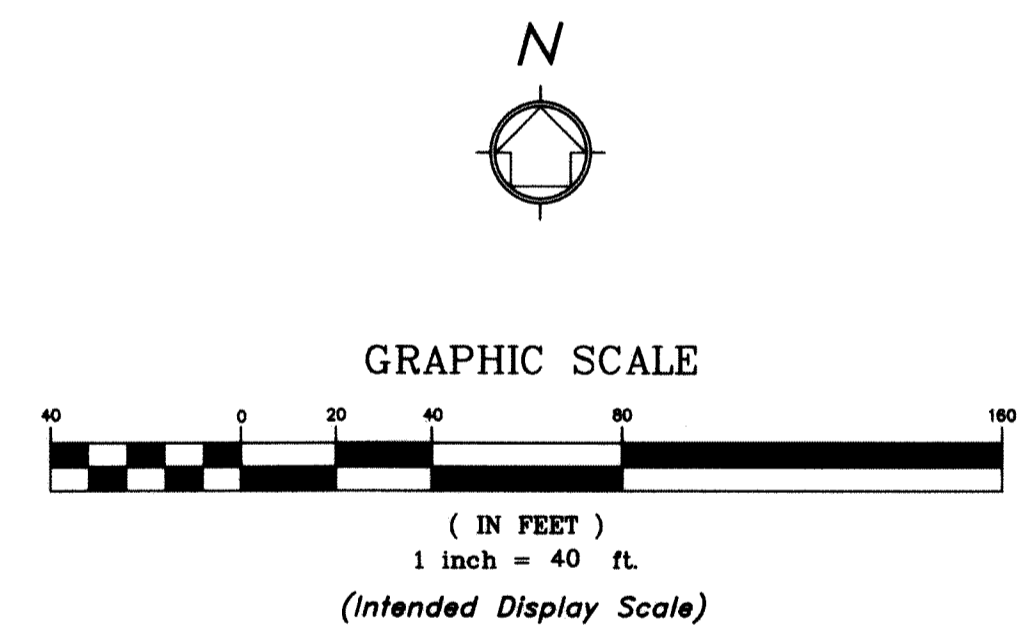
BEING A REPLAT OF A PORTION OF TRACT 64 D, BOCA DEL MAR NO. 7 PUD, PLAT BOOK 30, PAGES 210 THROUGH 217
 INCLUSIVE OF THE PUBLIC RECORDS, PALM BEACH COUNTY, FLORIDA. LYING AND SITUATE
 IN SECTION 27, TOWNSHIP 47 SOUTH, RANGE 42 EAST, PALM BEACH COUNTY, FLORIDA.

75

SHEET 5 OF 5 SHEETS

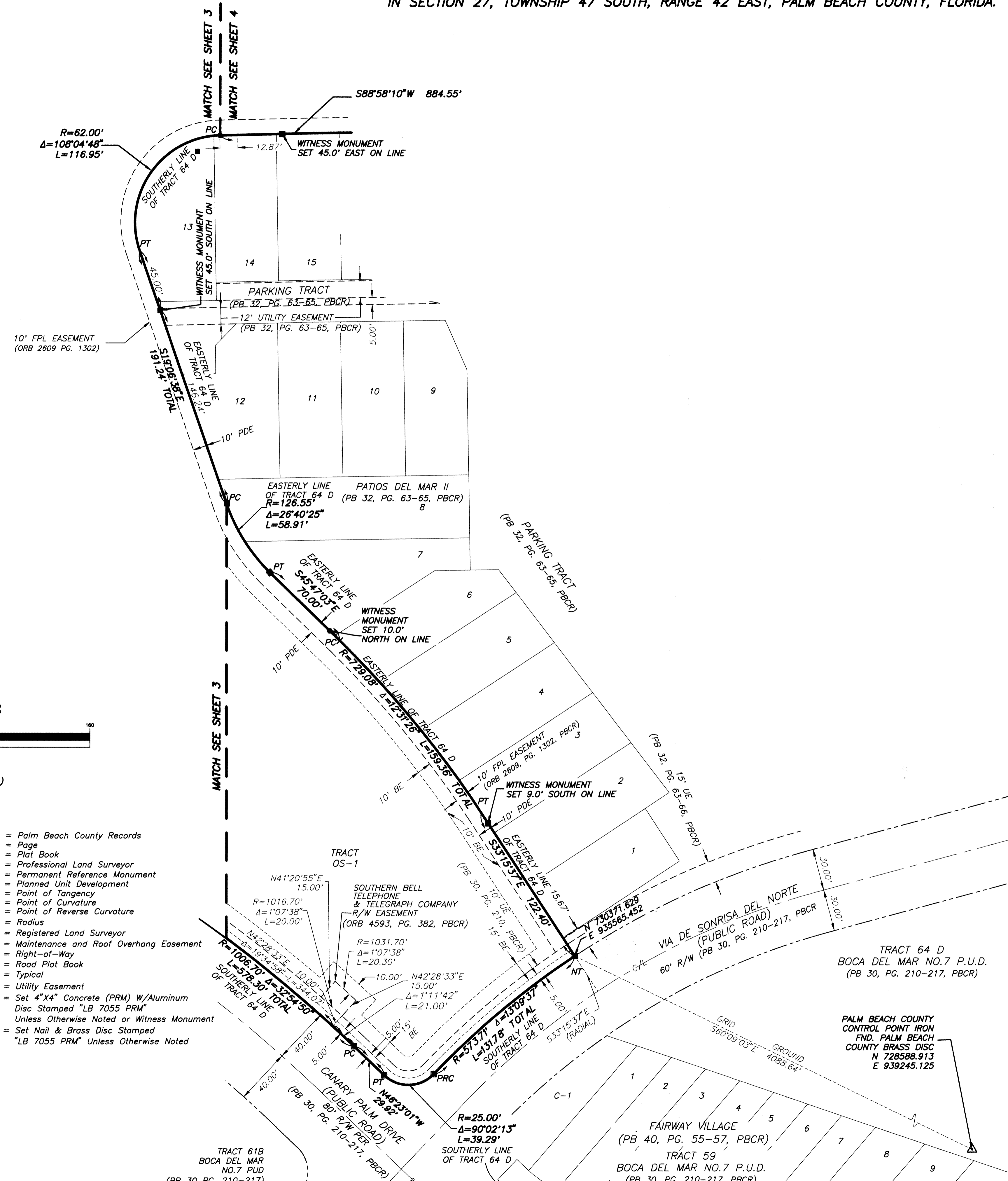


KEY MAP
(NOT TO SCALE)



LEGEND

- | | | | |
|-------|------------------------------------|--------|----------------------------------------------------------------------|
| BE | = Buffer | PBCR | = Palm Beach County Records |
| C/L | = Center Line | PG. | = Page |
| CCR | = Certified Corner Record | PB | = Plat Book |
| CONC. | = Concrete | PLS | = Professional Land Surveyor |
| CB | = Cord Bearing | PRM | = Permanent Reference Monument |
| CD | = Cord Distance | PUD | = Planned Unit Development |
| Δ | = Delta (Central Angle) | PT | = Point of Tangency |
| DE | = Drainage Easement | PC | = Point of Curvature |
| FPL | = Florida Power & Light | PRC | = Point of Reverse Curvature |
| FND. | = Found | R | = Radius |
| LME | = Lake Maintenance Easement | RLS | = Registered Land Surveyor |
| LMAE | = Lake Maintenance Access Easement | OHE | = Maintenance and Roof Overhang Easement |
| LWDD | = Lake Worth Drainage District | R/W | = Right-of-Way |
| L | = Length of Arc | RPB | = Road Plat Book |
| LB | = Licensed Business | (TYP.) | = Typical |
| NAD | = North American Datum | UE | = Utility Easement |
| NT | = Non Tangent | ■ | = Set 4"x4" Concrete (PRM) W/Aluminum Disc Stamped "LB 7055 PRM" |
| (NR) | = Non Radial | ● | = Set Nail & Brass Disc Stamped "LB 7055 PRM" Unless Otherwise Noted |
| ORB | = Official Records Book | | |
| ● | = Permanent Control Point (PCP) | | |
| PDE | = Public Drainage Easement | | |



NOTE:
 COORDINATES SHOWN ARE GRID COORDINATES
 DATUM - NAD 83 (1990 ADJUSTMENT)
 STATE PLANE FLORIDA EAST ZONE
 TRANSVERSE MERCATOR PROJECTION
 LINEAR UNIT = U.S. SURVEY FEET
 ALL DISTANCES ARE GROUND
 SCALE FACTOR = 1.000032176
 PLAT BEARING = GRID BEARING
 GROUND DISTANCE X SCALE FACTOR = GRID DISTANCE



2035 Vista Parkway, West Palm Beach, FL 33411
 Phone No. 866.909.2220, www.wginc.com
 Cert No. 6091 - LB No. 7055
 THIS INSTRUMENT WAS PREPARED BY KELSEY M. SMITH,
 P.S.M., PROFESSIONAL SURVEYOR AND MAPPER,
 LICENSE NO. 7096 FOR THE FIRM: WGI, INC.